

“QUAD” LCI Winch Display



The LCI "Quad" display combines the features of our Standard and Dual Tension models. The LCI "Quad" can be used to monitor line speed, payout, and two lines of tension in a variety of winch and wire rope applications. The compact LCI-90 and full featured LCI-100 displays are both available in the 4-parameter "Quad" configuration.

Five fully-sealed pushbuttons within a heavy-duty 316 stainless steel front panel access an easy-to-follow English language menu for field calibration changes, I/O channel configuration, alarm settings, network settings, and screen layout – all intuitive and right at your fingertips.

Line parameters are displayed on a bright 320x240 electroluminescent screen for superb readability in all light conditions. Four I/O channels and serial networking capability provide flexibility in line monitoring, weighing, data logging or SCADA applications, and the LCI "Quad" can link with LCI-90R displays or PC's (with WinchDAC) for remote viewing.

Monitor and control line speed, payout, and two lines of tension in single/multi winch systems used for equipment deployment, fixed-place mooring, barge positioning, drawbridge controls - - wherever accurate and reliable line control is required.

- Full programmability via English language menus.
- Six alarms, independently linked to any high/low setpoint parameters.
- Configurable parameter position, scale, and units.
- Two modes of analog sensor calibration.
- Network configurable.
- On screen calibration, diagnostics, and configuration security.
- Panel cutout (LCI-100) (9.25" x 7.0" cutout). Panel cutout (LCI-90) (7.15" x5.25" cutout).
- Watertight enclosure with bracket mount available.
- UL Listed Device.

Line Controls - Dual Tension Displays - WinchDAC

LCI "QUAD" Line Control Display

Operator Interface Features

- Full programmability via English language menus
- Independent calibration for each tension channel
- Configurable parameter position, scale, and units
- Six alarms, independently linked to any parameter
- Two modes of analog sensor calibration
- Network configurable
- On-screen diagnostics
- Configuration security
- Optional PC data logging interface

General Specifications

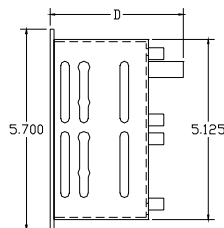
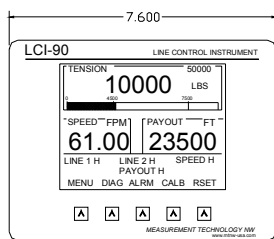
Display	320x240 graphic, EL Readable in all conditions
Enclosure Size	H 5.7" x W 7.6" x D 5.0" (LCI-90) H 8.0" x W 10.0" x D 5.5" (LCI-100)
Operating Temperature	-40°C to 75°C standard
Environmental	NEMA 4X front panel Watertight console* Watertight rear enclosure*

*Option

Instrument Specifications

Power	18-36 VDC (LCI-90 or LCI-100) 85-250 VAC (LCI-100 only) Isolated, surge protected
Analog Input	4 or 6 channels 4-20 mA, 0-5 VDC, strain gauge* 0.01% full scale accuracy 1500 VDC Isolation*
Sensor Excitation	Regulated 12 and 5 VDC, 0.5 A 24 VDC unregulated, 0.2 A total
Analog Output	2 or 4 channels* 4-20 mA, 0-10 VDC
Count Input	Quadrature encoder, 5, 12-24 VDC Inductive proximity, Hall Effect 10 kHz Bandwidth
Digital I/O	4 or 8 channels* Opto modules DC output and dry contact
Serial Communication	RS-485, isolated, 2 wire RS-232, 1 channel, non-isolated
Alarms	For parameters High and low setpoints

LCI-90

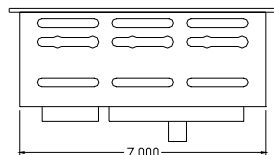


LCI-90

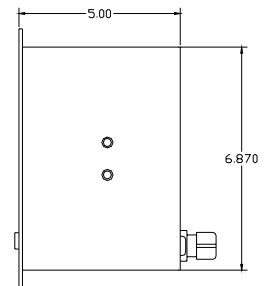
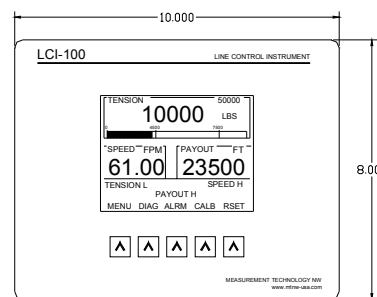
Depth measurement "D" varies from 3.78" to 4.73" depending on I/O configuration

LCI-90 unit fits into 7.15" x 5.25" cutout

LCI-90 shown with standard NEMA 1 rear enclosure (both the LCI-90 and LCI-100 models are supplied in this standard panel mount configuration)



LCI-100

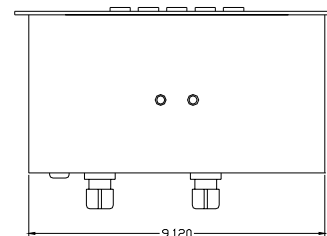


LCI-100

Depth measurement with standard panel mount NEMA 1 rear enclosure is 5.45"

LCI-100 unit fits into 9.25" x 7.00" cutout

LCI-100 shown with optional NEMA 4 stainless steel rear enclosure (enclosure available with gimbal bracket mount for both the LCI-100 and LCI-90 models)



4211- 24th Avenue West, Seattle, WA 98199
Phone/206-634-1308 Fax/206-634-1309
www.mtnw-usa.com